



SmartPress RP

VEGA EXTRACTION PRESS

Features:

- Unique and strong frame design
- Reliable high-speed hydraulics
- Up to 63 bar membrane pressure
- 7.5x safety factor of mechanical strength
- Built using above industry-standard materials

The first and only extraction press with the same lifespan as a batch washer.



GERMAN WASH TECHNOLOGY
ENGINEERING YOUR FUTURE

DESIGN FEATURES

With a frame design that is built to last

The frame construction of the *SmartPress RP* is of a unique, robust design to minimize any concentration of stress within the structure.

With no critical operational elements, the frame is cut from certified steel plate and consists of only four main parts. Every frame has been certified and x-rayed in order to ensure the highest possible quality of steel.

The design is formed by two solid rectangular frame elements replacing the conventional tie rods, or posts. By avoiding all weak, fatigue and stress points associated with fretting, or corrosion, during operation; our press design eliminates the problems with rod- or post-fixings at the top and bottom plates.

This allows the pressure to be distributed across a larger area than in conventional designs; resulting in a stronger and more reliable overall design.

As a comparison, most conventional designs has a safety factor of 2.5, whereas the Smartpress has 7.5.

Now with up to 63 bar (913 psi)!



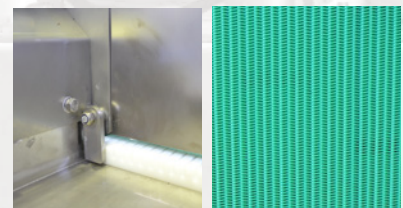
Fast removal of water allows for higher efficiency

A perforated basket ring immediately releases surface water directly to the water collection tank, without the water needing to pass through the linen.

- Efficient & reliable moisture-resistant drive operates the unloading conveyor belt and provides a fast and trouble-free discharge of the pressed batches.
- 50% more perforated open-area, with a specially designed base-drain-plate, resulting in fast water evacuation, with no back-pressure.
- Drain-plate design allows for easy maintenance and cleaning.

Perforated conveyor belt

A newly-developed conveyor-belt design, with smart and smooth perforations, comes as a standard in the SmartPress RP. This conveyor belt system is both hygienic and easy to clean.



HYDRAULIC SYSTEM



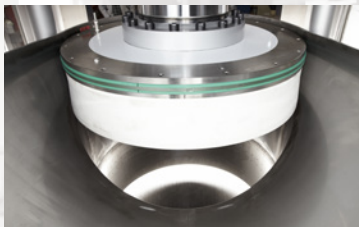
The complete Hydraulics system is placed on a collection-tray, which allows for easy installation and prevents any leakages from the hydraulics system entering the machine.

Maximum energy saving guaranteed!

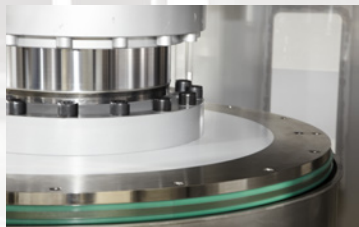
The Smartpress has not only exceptional strength and stability, but the specially designed high-speed hydraulics provides powerful and fast operation cycles.

During operation, the high-speed hydraulics can build up the membrane pressure to 63 bar (913 psi) in only 34 seconds.

This fast pressure build-up ensures the lowest level of moisture-retention even at very short cycle times; making the SmartPress RP the best press in its class.



High-temperature and pressure-resistant light-colored membrane.



The press-plate and membrane are designed for fast and easy maintenance and servicing.



High-precision sensor technology for precise control of the ram position during pressing.



Freely-adjustable in both speed & pressure

The proportionally controlled hydraulics system operates at all times within the preselected pressure range and is therefore adjusted to the needs of the textile.

For maximum efficiency, the system can be programmed to reach its target in the shortest possible time.

The system can also be programmed to work in gentle gradual steps when processing sensitive linen types.



The standard high-speed hydraulics ensures fast operation of both the ram and basket, thus reducing the operational time to a minimum and maximizing the available time at high-pressure.

All hydraulic spare parts are available worldwide.

vega
S Y S T E M S

ENGINEERING YOUR FUTURE

CONTROL

Integrated 5.7" color touch-panel with a user-friendly interface

The control provides visual data for operation and fault-diagnostics. 50 customized pressing programs can be made and stored directly in the system, or transferred to a USB stick.

Each program is freely adjustable in nine steps, in pressure, time and speed as well as setting the timer of the pressure relief.

The system is most suitable for special linen types, which requires the speed of operation and operating pressures to be tightly controlled.

Vega Germany		01.05.2011 11:11		
programme no.	programme name			
- 0 +	Testprogramm			
step	step pressing	pressing speed	runtime: press	runtime: relax
1	20.0 bar	60	5 sec	0 sec
2	25.0 bar	80	15 sec	0 sec
3	40.0 bar	100	30 sec	2 sec
4	43.0 bar	80	35 sec	5 sec
5	0.0 bar	0	0 sec	0 sec
F1: programmes 1-5		F3: program management		
F2: programmes 6-9				



Hygienic Design

- Special hygiene approved design.
- Special DD-Structure coating - for protection against rust.
- All parts coming in contact with linen, or water, are made from stainless steel.
- Integrated high-volume press-water collection tank, designed for easy cleaning.

Maintenance & Safety

- Large service doors for easy & safe maintenance and cleaning
- Extensive safety equipment
- Spare parts are available worldwide
- 24/7 Service link available (*Optional*)
- Built on European CE safety standards (*UL / CSA on request*)



TECHNICAL DATA

Available Batch Sizes:	40 kg / 88 lbs	50 kg / 110 lbs	60 kg / 132 lbs	80 kg / 176 lbs	100 kg / 220 lbs
Pressure on Linen:	43 or 63 bar	43 or 63 bar	43 or 63 bar	47 bar	47 bar
Hydraulic Pump:	15 KW / 400 V / N / PE				
Basket diameter:	903 mm (35.55 inches)			1058 mm (41.65 inches)	
Max. Wet Linen Volume:	276 L / 73 gal	323 L / 85 gal	380 L / 100 gal	468 L / 124 gal	586 L / 155 gal

For more information, please contact us.



VEGA systems B.V.
 Lauwersmeer 9
 5347 JR Oss, The Netherlands
 Phone: +31 (0) 412 407090
 Fax: +31 (0) 412 407091
 info@vegasystems.nl
 www.vegasystems-group.com

**VEGA Systems Wash Technology
 Germany GmbH**
 Sudring 20, 54657
 Badem, GERMANY
 Phone: +49 (0) 656 396260
 info@vegagermany.de
 www.vegagermany.com