



# SmartDry DT Steam

## VEGA SYSTEM DRYERS

### Features:

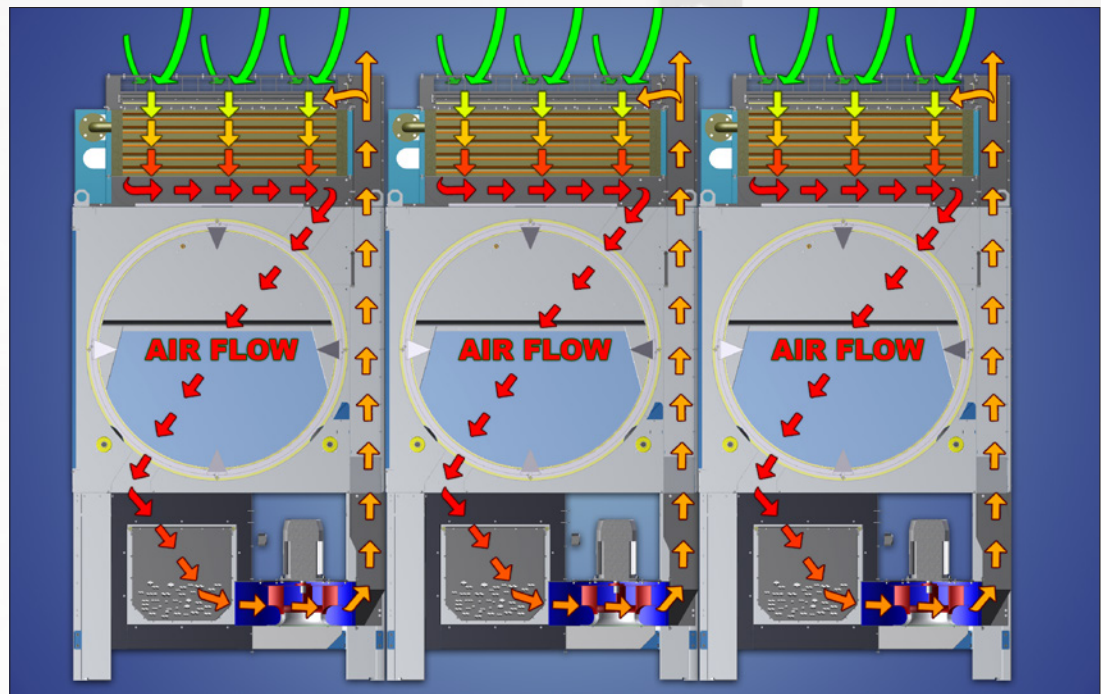
- Premium dryers
- High efficiency
- Unique airflow concept
- Standalone or system dryer
- Built with above industry-standard materials



GERMAN WASH TECHNOLOGY  
**ENGINEERING YOUR FUTURE**

**AIRFLOW CONCEPT**

Designed to be easily accessible and to save space



**Explaining the Air-Flow**

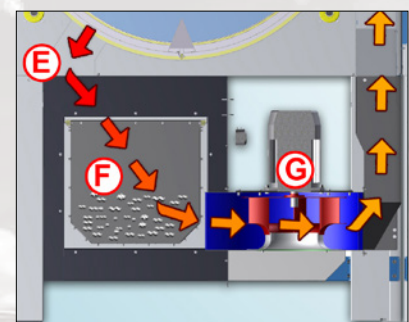
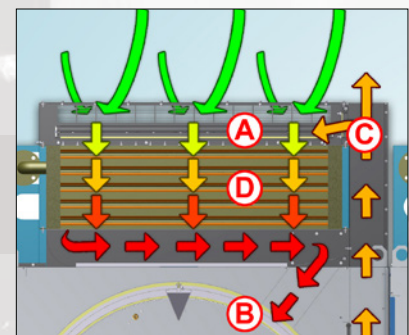
As an option, all DT dryers can be fitted with an adjustable Air Recovery System (point C) for maximum energy saving. The air that is recycled is pushed back into the main airflow where it is mixed with the fresh air before it is filtered (point A) and heated (point D) and again entering the drum (point B).

To protect the steam coil, the fresh- & recovered-air needs to pass the top lint-filter (point A) before entering the steam-coil (point D). Rapid thermal transfer ensures fast and effective heating across the full width and depth of the drum.

By ordering the "Energy saving" option, the air-recovery flap (point C) is fully automatically modulated according to the drying process; for maximum energy savings, while optimizing the drying time. The air and lint exits the drum (through point E) and then passes through a large active-area stainless-mesh lint-filter (point F), where the lint is collected.

After the air has passed the lint-filter, it goes through to the High-performance radial exhaust fan (point G) before exiting to the atmosphere. With "Energy saving" option, the blower (point G) is frequency controlled and fully modulated according to the drying process.

This guarantees maximized efficiency and energy savings.



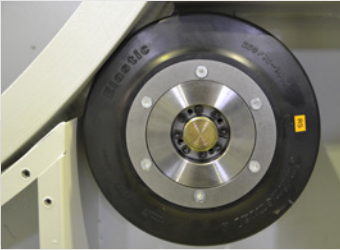


## CONSTRUCTION



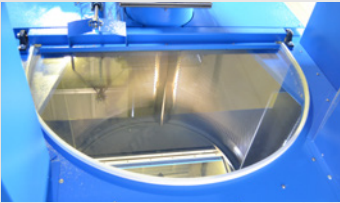
### Drive system & Temperature Resistant 9.8" Wheels

As a standard, the drive motor, mounted directly on the drive shaft (*Direct driven, without any belts or chains*) with easy access for maintenance. The drum is supported by large, temperature resistant 9.8" wheels, mounted outside the hot air-flow, for easy maintenance. The drum does not need any sealing to prevent air leakage, eliminating the wear-and-tear factor. This guarantees continuous and efficient production over many years with minimal need for maintenance.



### New Design & Greater Control

The robust one-piece, distortion free inner drum, fitted with precision drive rings, ensures smooth and long lasting operation. The new design, with honeycomb-perforated stainless-steel drum, ensures gentle processing of linen, while allowing for effective water evaporation and high air-flow rates through the drum.



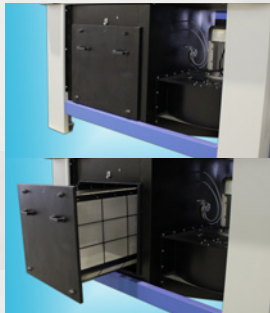
As an option, the perforated stainless steel panels can be changed easily for cleaning. The dryer comes complete with pneumatically-activated heat-resistant loading and unloading glass doors. This allows the operator to monitor the linen inside the drum and also to optimize the drying process by adjusting the drum rotation speed, and adjusting the airflow.



### Topside lint-filter

The top lint-filter protects the steam coil and filters the fresh- and recovered-air before it is heated and enters the drum.

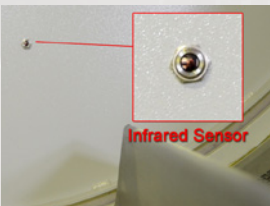
The top lint-filter can be pulled out and cleaned due to its simple design.



### Lint-filter Drawer

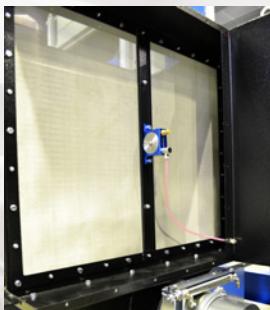
As a standard, the dryers are equipped with a large stainless-steel lint-filter box, designed to be easily accessible and maintain.

The sliding lint-filter box can be opened from the loading-or unloading-side.



### Infrared Sensor to monitor the laundry temperature

An infrared sensor is located inside the drum, where it measures the exact laundry temperature during the drying process. This optimizes the drying time, and increases production while balancing the inlet temperature and the linen temperature, allowing the machine to use energy more efficiently.



### Dryer Lint-Filter System

As an option, the machine can be equipped with a large stainless steel lint-filter, with program controlled lint-filter cleaning by vibration.

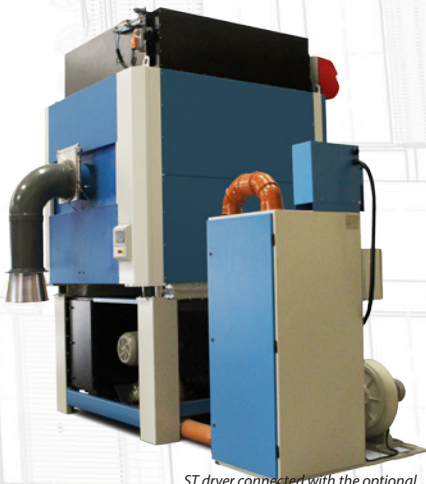
In combination with the optional "central lint-collection box", the lint is collected and discharged fully automatically into a central lint-collection bag.

The central lint-collecting box is able to collect the lint from up to six dryers.

**Vega**  
S Y S T E M S

ENGINEERING YOUR FUTURE

## ADDITIONAL OPTIONS



ST dryer connected with the optional Central lint-collection box.

### SmartDry ST

Pass-through Suction Dryer with loading on the front side by vacuum suction system.



### Suction loading from the unloading side

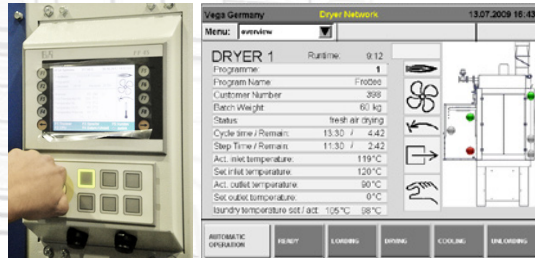
Combined Pass-through Dryer with loading on the front side by conveyor or loading on the back side by suction loading.

## CONTROL

### Controlled by industrial PLC system

With a clear operator interface and easy programming of all machine parameters. The control provides visual information on the machine operation and fault-diagnostics.

Up to 49 customized drying programs can be made and stored directly in the system, or transferred to a USB stick. Each program is freely adjustable within relevant parameters. The system is fully optimized for processing special linen types.



Stand-alone control  
5.7" Color Touch Screen

Network control 15" Color Touch Screen

## TECHNICAL DATA

Type :	DT 50 Steam	DT 60 Steam	DT 80 Steam	DT 120 Steam	DT 160 Steam
Batch Sizes :	50 kg / 110 lbs	60 kg / 132 lbs	80 kg / 176 lbs	120 kg / 264 lbs	160 kg / 352 lbs
Drum Volume :	1250 L / 330 gal	1500 L / 396 gal	2000 L / 528 gal	3000 L / 792 gal	4000 L / 1056 gal
Heating :	(Saturated Steam) up to 10 bar (145.03 psi)				
Voltage / Frequency :	3 Phase, 400V / 50/60 Hz				

For more sizes & information, please contact us.



**VEGA systems B.V.**  
Lauwersmeer 9  
5347 JR Oss, The Netherlands  
Phone: +31 (0) 412 407090  
Fax: +31 (0) 412 407091  
info@vegasystems.nl  
www.vegasystems-group.com

**VEGA Systems Wash Technology  
Germany GmbH**  
Sudring 20, 54657  
Badem, GERMANY  
Phone: +49 (0) 656 396260  
info@vegagermany.de  
www.vegagermany.com