



# ELITECH LINE

## EL70E

TYPE	Pass-through dishwasher
LINE	ELITECH LINE
BASKET	500x600
SIZE	720x770x1435/1900h

The **EL70E** hood-type dishwasher can wash up to 22 pizza dishes in a very tight space: only 720 mm wide while maintaining the same depth of traditional inlet/outlet stainless steel tables, with a maximum productivity of 60 baskets/hour (1320 dishes/hour). Thanks to the **powerful wash pump** and washing arms, it is suitable for dishes, objects, bread baskets, GN 1/1 and 600x400 baking trays as its basket can fit utensils measuring up to 500x600x410(h)mm. The hood-type models are fitted with an easily removable basket support for easy cleaning and a **rounded moulded tank with integral filters** for perfect draining and absolute hygiene. The **"PUSH TO START"** cycle start system ensures less waste preventing the start of empty washes.

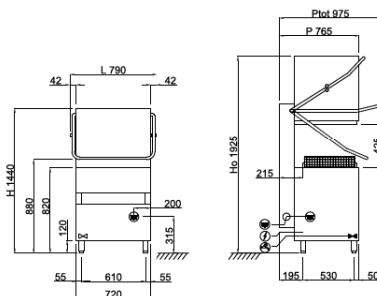
The dishwashers of the **ELITECH** line ensure maximum performance thanks to the standard Acquatech System which, through an atmospheric boiler and rinse pump, maintains **constant temperature and pressure** and optimum water consumption. Elitech ensures a sanitising rinse cycle and proves to be the perfect choice for canteens, nursing homes, pastry shops, bakers and butchers where compliance with HACCP rules is essential. For anyone seeking perfectly sparkling glasses, it is possible to connect a **Reverse Osmosis System** which purifies water and reduces detergent and rinse-aid consumption, ensuring excellent results and perfect glasses without the need for hand drying. The innovative **UNIKO tempered glass touch screen display** makes any operation simple and intuitive, from the choice of the most suitable wash cycle to its progress control, as well as constantly monitor the status of the dishwasher with ease. The large variety of wash cycles makes the dishwasher customisable according to your needs. Constant self-diagnosis allows you to minimise machine downtime, promptly warning the technician through the **Wi-Fi IKLOUD** control system that offers the possibility of remotely changing the dishwasher parameters and resolving the situation in real-time.


The electronic control allows you to manage various parameters to give you an absolute customisation level and the continuous **self-diagnosis** allows you to **minimise machine downtime**, suggesting some operations that need to be verified. The **self-cleaning cycle** at the end of the day cleans the wash tank and empties the hot water from the boiler, preventing limestone from building up inside. The standard **double peristaltic electric rinse-aid and detergent dispenser** ensures the best result from each wash cycle with great savings thanks to the precise dosage managed by the electronic card; whereas, the **moulded washing and rinsing arms** ensure great reliability and durability. The **Thermo-stop** function checks that washing and rinsing begin only when the desired temperature is reached. The bodywork is made entirely of **AISI 304** s


DISHWASHERS FEATURES	ELITECH LINE EL70E
Dimensions - (mm) L - P - H	720x770x1435/1900h
Ø height plate max	400mm
Height pot max	395mm
LT bread basket	60 (H=400mm)
Trays	GN1/1 - 60x40
Tank heating element - Tank capacity	4,5kW - 37lt
Boiler heating element - Boiler capacity	5,4kW - 7,3lt
Washing pump	1,34kW / 1,8Hp
Total power input / Current	6,74kW / 16A
Standard input voltage	400V3N+T 50Hz
Recommended inlet water temperature	+55°C
Water hardness	7÷10 °f
Water consumption per cycle (inlet suggested pressure 2 BAR)	2,0lt GUARANTEED
Adjustable detergent and rinse-aid dispenser	ELECTRIC
Acquatech system rinse	si
<b>STANDARD EQUIPMENT</b>	
Basket for trays 10/12 compartments 500x600x100mm	1
Basket for glasses dim.500x600x100mm	1
Basket for 22 dishes dim.500x600x100mm	1
8 division cutlery insert	1
Integral tank filter	2
<b>OPTION</b>	
UNIKO touch display with IKLOUD Wi-Fi control	●
Input voltage 230V/3+T	●
Booster pump kit 0,5Hp	-
Drain pump kit 40W	●
Boiler heating element 4,5kW	●
Boiler heating element 9kW	●
Reverse osmosis system	●
Basket for trays with 4 compartments dim.500x500x200mm	●
Inclined basket for wine glasses dim.500x500x170mm	●
Kit 4 Stainless steel feet 50-70mm	-
Remote control with LCD display	●


● INSTALLABLE ACCESSORY , - NOT INSTALLABLE ACCESSORY

## EL70E



 400V3N+T 7,04kW  
L=1950 (5 POLES)

 G 3/4" M  
L=1200

 Ø25x30  
L=1550