



KORAL LINE

K981E

TYPE	Warewasher
LINE	KORAL LINE
BASKET	600x670
SIZE	775x810x1900h

The **KORAL** line is distinguished by its wide range of models suitable for any situation. Through the electronic card, the control system provides great customisation options based on your needs, allowing you to accurately adjust any parameter and ensure optimum washing results. The innovative UNIKO tempered glass touch screen display makes any operation simple and intuitive, from the choice of most suitable wash cycle to its progress control, as well as constantly monitoring the dishwasher state with ease. The large variety of wash cycles makes the dishwasher customisable according to your needs. Constant self-diagnosis allows you to minimise machine downtime, promptly warning the technician through the Wi-Fi IKLOUD control system that gives the possibility of remotely changing the dishwasher parameters and resolving the situation in real-time.

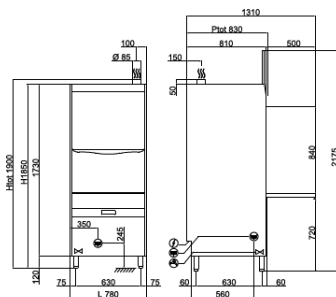
Thanks to its dimensions, the **K981E** warewasher is able to effectively wash objects measuring up to 575x645x850(h)mm. It is suitable for washing baking trays, pots of various kinds, mixing bowls, utensils and even 26 dishes at each cycle with a maximum productivity of 30 baskets/hour (780 dishes/hour). The work height and the **counterbalanced door** facilitate basket loading while the **double insulated walls** improve thermal-acoustic insulation. The **rounded moulded tank with integral filters** ensures maximum hygiene and perfect draining.


The electronic control allows you to manage various parameters to give you an absolute customisation level and the continuous **self-diagnosis** allows you to **minimise machine downtime**, suggesting some operations that need to be verified. The **self-cleaning cycle** at the end of the day cleans the wash tank and empties the hot water from the boiler, preventing limestone from building up inside. The standard **double peristaltic electric rinse-aid and detergent dispenser** ensures the best result from each wash cycle with great savings thanks to the precise dosage managed by the electronic card; whereas, the moulded washing and rinsing arms ensure great reliability and durability. The **Thermo-stop** function checks that washing and rinsing begin only when the desired temperature is reached. The bodywork is made entirely of **AISI 304**


DISHWASHERS FEATURES	KORAL LINE K981E
Dimensions - (mm) L - P - H	775x810x1900h
n° baskets/hour - (+55°C)	Max 30
Ø height plate max	630mm
Height pot max	840mm
LT bread basket	100 (H=840mm)
Trays	GN1/1 - 60x40 GN2/1 - 60x80
Tank heating element - Tank capacity	4,5kW - 37lt
Boiler heating element - Boiler capacity	5,4kW - 12lt
Washing pump	2,0kW / 2,7Hp
Total power input / Current	7,4 kW / 16A
Standard input voltage	400V3N+T 50Hz
Recommended inlet water temperature	+55°C
Water hardness	7÷10 °f
Water consumption per cycle (inlet suggested pressure 2 BAR)	2,0lt
Adjustable detergent and rinse-aid dispenser	ELECTRIC
STANDARD EQUIPMENT	
8 division cutlery insert	1
Integral tank filter	2
Inox basket dim.600x670x100mm	1
Basket for trays with 5 compartments	1
Insert 13 plates	si
OPTION	
UNIKO touch display with IKLOUD Wi-Fi control	●
Input voltage 230V/3+T	●
Booster pump kit 0,5Hp	●
Drain pump kit 40W	●
Boiler heating element 4,5kW	●
Boiler heating element 9kW	●
Reverse osmosis system	-
Insert 13 plates	●


● INSTALLABLE ACCESSORY , - NOT INSTALLABLE ACCESSORY

K981E



 400V3N+T 7,40kW
L=1950 (5 POLES)

 G 3/4" M
L=1200

 Ø25x30
L=1550